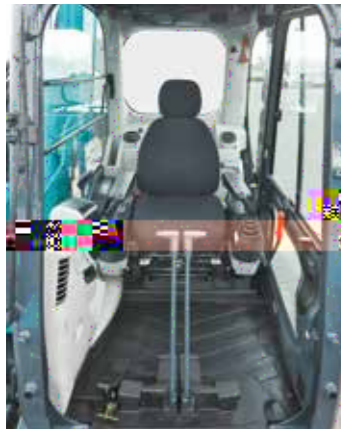




III

A Working Environment that Helps the Operator Concentrate on the Job at Hand!

Big Cab



The "Big cab" provides a roomy operating space with plenty of legroom, and the door opens wide for entry and exit. As well as giving a wide, open view to the front, the cab has increased window areas on both sides and to the rear, for improved visibility in all directions.

Excellent Visibility

Taking out the right-side cab support to make a single window has improved visibility to the right.



Wide-Access Cab Aids Smooth Entry

Easy entry and exit assured with wider cab entry and safety lock lever integrated with mounting for control levers.



Comfortable Operating Environment



Double slide seat



Reclining seat



Spacious luggage tray



Large cup holder



Powerful automatic air conditioner



Travel speed select switch
The switch is equipped with the dozer lever.



One-touch lock release simplifies opening and closing front window

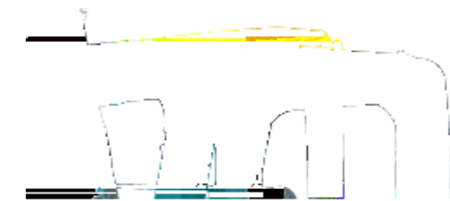
Always New Information Display



Large gauges with large numbers and letters and glare-reducing visors are always easy to read regardless of working conditions.

ROPS Cab

The newly developed, ROPS (Roll-Over-Protective Structure)-compliant cab clears ISO standards (ISO-12117-2: 2008) and ensures greater safety for the operator should the machine tip over



Level 2 FOPS Guard (ISO 10262) is available as option.

Safety Scenarios into Consideration



Firewall separates the pump compartment from the engine



Retractable seatbelt requires no manual adjustment



Rear view camera & monitor (optional)



Hammer for emergency exit

Handrails meet European standards

Thermal guard prevents contact with hot components during engine inspections

